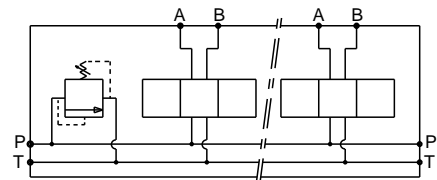
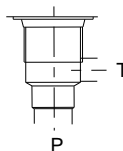


Stations	X	Y	(kg)
1	80	56	5.70
2	160	136	11.30
3	240	216	16.90
4	320	296	22.60
5	400	376	28.40
6	480	456	34.10
7	560	536	39.80
8	640	616	45.50

Cavity C10-2



### Technical specifications

Material	: Cast iron EN-GJL-250 _ Phosphatation
Pressure	: 300 bar max
Flow rate	: 120 L/mn max

Designation code :

**MR - 5 - \* . G / C10-2**

MECABOR

CETOP 5  
side entry

Station number

Cavity

G : ports BSP