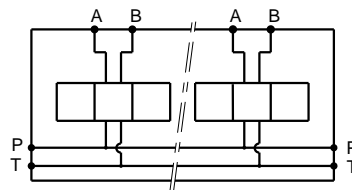


Stations	X	Y	(kg)
1	70	54	2.35
2	120	104	3.90
3	170	154	5.45
4	220	204	7.00
5	270	254	8.55
6	320	304	10.10
7	370	354	11.65
8	420	404	13.20



Technical specifications

Material	: Cast iron EN-GJL-250 _ Phosphatation
Pressure	: 300 bar max
Flow rate	: 50 L/mn max

Designation code :

MR . K - 3 - * . G

MECABOR

Bottom entry

CETOP 3

G : ports BSP

Station number