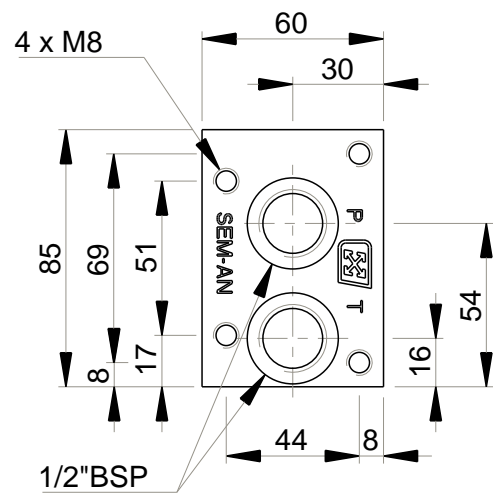
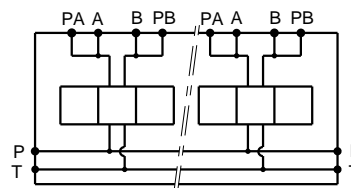


1/2" BSP
O-Ring \varnothing 26.7x1.78



Stations	X	Y	(kg)
1	70	54	2.35
2	120	104	3.90
3	170	154	5.45
4	220	204	7.00
5	270	254	8.55
6	320	304	10.10
7	370	354	11.65
8	420	404	13.20



Technical specifications

Material : Cast iron EN-GJL-250 _ Phosphatation
 Pressure : 300 bar max
 Flow rate : 50 L/mn max

Designation code :

MR . K - 3 - * . G . P . AB

MECABOR

Bottom entry

CETOP 3

Station number

Pressure test points
on A and B

G : ports BSP