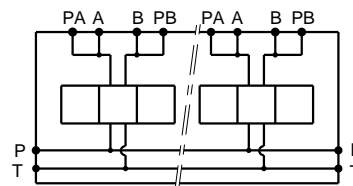


Stations	X	Y	(kg)
1	70	54	3.50
2	120	104	6.00
3	170	154	8.50
4	220	204	11.00
5	270	254	13.50
6	320	304	16.00
7	370	354	18.50
8	420	404	21.00



Technical specifications	
Material	: Cast iron EN-GJL-250 _ Phosphatation
Pressure	: 300 bar max
Flow rate	: 50 L/mn max

Designation code :

MR - 3 - * . G . P . AB

MECABOR

CETOP 3
side entry

Station number

Pressure test points
on A and B

G : ports BSP