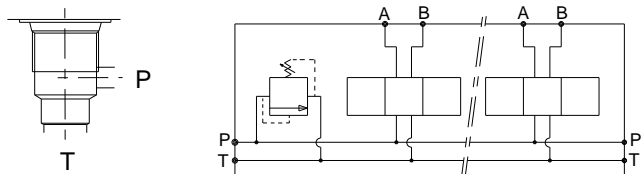


Stations	X	Y	(kg)
1	90	78	2.90
2	120	108	3.80
3	170	158	5.30
4	220	208	6.80
5	270	258	8.30
6	320	308	9.80
7	370	358	11.30
8	420	408	12.80

Cavity C10-2



Technical specifications	
Material	: Cast iron EN-GJL-250 _ Phosphatation
Pressure	: 300 bar max
Flow rate	: 60 L/mn max

Designation code : **MR - 3 - * . G / C10-2**

